

ABU DHABI
DESERT
CHALLENGE

21ST - 27TH FEB

2025

SUPPLEMENTARY
REGULATIONS

ORGANIZED BY



SANCTIONED BY



MOTO / QUAD



IMPORTANT

Please note that only the specifics of the 2025 Abu Dhabi Desert Challenge Rally are listed in this regulation and NEW Points of the 2025 FIM WORLD RALLY-RAID CHAMPIONSHIP.

If an article is not mentioned in this regulation, it is because the 2025 FIM WORLD RALLY-RAID CHAMPIONSHIP SPORTING REGULATIONS is systematically applied.

The 2025 ABU DHABI DESERT CHALLENGE SUPPLEMENTARY REGULATIONS consist of all the following documents:

- The 2025 SUPPLEMENTARY REGULATIONS.
- The TECHNICAL REGULATIONS
- The APPENDICES attached to this regulation
- The ASSISTANCE REGULATIONS, articles include in this regulation
- The BULLETIN (S) published during the Rally.

The event will be held in accordance with the relevant legal and administrative provisions of the host country, the FIM Sporting Code, the applicable FIM Technical Regulations, the FIM Medical, Anti-Doping and Environment Codes, the FIM Disciplinary and Arbitration Codes and the Regulations. The FIM World Rally-Raid Championship sporting Regulations and its Appendices, these Supplementary Regulations and any other regulations adopted by the FIM International Jury.

Documents you can find on the FIM website: www.fim-moto.com

- FIM SPORTING CODE
- FIM WORLD RALLY-RAID CHAMPIONSHIP REGULATIONS
- FIM RALLY-RAID TECHNICAL RULES
- FIM DISCIPLINARY AND ARBITRATION CODE
- FIM ENVIRONMENT CODE
- FIM MEDICAL CODE
- FIM ANTI-DOPING CODE
- FIM ETHICAL CODE.



2025 SUPPLEMENTARY REGULATIONS

Article FIM	Article 2025 SR		
080.1		GENERAL	P 6
080.1.4.	1.	Support Races	
080.2		OFFICIALS AND PROCEDURES	P 6
080.2.4.	1.	FIM International Jury & Senior Officials	
	2.	Identification of Officials of the Organization	
080.3		SUPPLEMENTARY REGULATIONS AND INSURANCE	P 7
	1.	Publication	
	2.	Organizer's name, address and contact details	
	3.	Organization Committee	
	4.	Programme of the Rally	
	5.	Access & contacts for Rally HQ and Bivouacs	
080.4		ENTRIES	P 11
	1.	ADDC Entry procedure	
	2.	Customs obligation – ATA Carnet	
	3.	Team entries name	
	4.	Service vehicles / Service Crews entries conditions	
	5.	Entry fees for Riders, for Bike or Quad	
	6.	Entry fees for Service vehicles & Service Crews	
	7.	Payment details	
	8.	Abu Dhabi Desert Challenge entry incentive	
	9.	Refunds	
	10.	Entry refusal - Withdrawal – No show	
	11.	Cancellation or rescheduling of the Event	
080.5		INSURANCE	P 16
	1.	Public liability cover	
	2.	Overseas & GCC entries Cover	
	3.	Declaration in case of accident	
	4.	Individual accident insurance	
	5.	Insurance includes in your FIM licence	
	6.	Medical insurance rules in UAE	
	7.	Road insurance for Overseas Service Vehicles	
080.6		ENTERED RIDERS	P 17
	1.	Entry conditions for the Rider	
	2.	Coverage images – Image Rights	
	3.	Drone(s)	
	4.	Particular conditions of visited countries	
080.7		MOTORCYCLES, CATEGORIES & OTHER SPECIFICATIONS	P 20
080.7.1.	1.	FIM Categories, Groups/classes admitted for 2025 ADDC	
	2.	ROAD TO DAKAR	
080.7.4.	1.	Identification	
080.7.5	1.	Advertising	
080.8		TECHNICAL INSPECTION & ADMIN. CONTROL	P 22



080.8.1.	1.	Administrative obligations	
080.8.2.	1.	Preliminary Technical Inspection	
080.8.4.	1.	Technical Inspection at the end of the event	
080.9		FUEL	P 23
	1.	Fuel at Abu Dhabi Energy Center	
	2.	Refuel at Al Dhannah Bivouac	
	3.	Refuel at Mzeer'ah Bivouac	
	4.	Fuel on road sections	
080.10		RALLY HEADQUARTERS	P 24
	1.	Rally Control EMERGENCY NUMBER	
080.11		ROAD BOOK, NAVIGATION AND BRIEFING	P 24
	1.	Official Itinerary	
	2.	Navigation Waypoints	
	3.	Navigation Rules	
	4.	Electronic Road Book	
080.11.8	1.	General & Daily Briefings	
	2.	Safety Briefing	
080.12		ROUTE	P 26
	1.	Forbidden Reconnaissance	
	2.	Private tests	
	3.	Traffic regulations	
	4.	Crossing of inhabited area	
080.13		STAGES	P 27
	1.	Length of Selective Sections (SS)	
080.14		PROLOGUE	P 28
	1.	Prologue location & procedure	
080.15		SELECTIVE SECTIONS (SS)	P 28
	3.	Distance of the Selective Sections	
080.17		SARTING ORDER	P 28
080.17.1.	1.	Minimum interval between the last Bike/Quad & 1 st FIA car	
080.17.3.	1.	First Stage	
080.17.4.	1.	Second stage and subsequent Stages	
080.17.6.	1.	Collective Start (Mass Start)	
080.17.7.	1.	Marathon Stage	
080.17.8.	1.	Change in the start order – Repositioning	
080.17.9.	1.	No start or abandon in a Selective Section / Stage	
080.17.11.	1.	Openers bonus	
080.18		ASSISTANCE, TOWING AND REFUELLING	P 29
080.18.1.	1.	Forbidden Assistance	
	2.	Tyres	
	3.	Transport from Abu Dhabi to Bivouacs	
	4.	Team personnel / Service Crews	
080.18.4.	1.	Fuel / Autonomy	
	2.	Refueling during a Selective Sections	
	3.	Automatic Control for refueling and neutralizations	
080.22		PASSAGE CONTROL	P 30



PRESENTED BY



ORGANIZED BY



SANCTIONED BY



080.22.3.	1.	Passage Control Penalties	
080.24	1.	FIXED PENAL. (FP) / SPORTING PENALTIES (SP) FP and SP value	P 31
080.25	1.	PARC FERME (CLOSED PARK) Parc Ferme location during the Event	P 31
080.26	1. 2.	SERVICE PARK AND BIVOUACS Abu Dhabi Service Park Bivouacs at Al Dhannah & Mizeer'ah	P 31
080.28		SURVIVAL EQUIPMENT	P 32
080.29.1	1. 2. 3. 4. 5.	COMPULSORY SAFETY EQUIPMENT GPS UNIK4 with integrated Sentinel Inflatable jacket et other protections Tracking System Safety plan Helping at an accident	P 32
080.30	1.	ENVIRONMENT Protecting the Environment	P 33
080.32	1.	RETIREMENT – DISQUALIFICATION Number plate cross out in black	P 34
080.33	1.	CLOSURE OF TRACK Mechanical problem	P 34
080.34	1.	CLASSIFICATION General	P 34
080.35	1.	PROTESTS – APPEALS Protest fees / Deposit	P 34
080.36	1. 2.	CEREMONIAL FINISH-PODIUM CEREMONY-PRIZES Location and Procedure List of prizes – Cups	P 34
SUMMARY OF THE PENALTIES			P 35
Appendix 1 - Road to Dakar			P 36
Appendix 2 – Adventure Trophy - MALLE MOTO Rules			P 37
Appendix 3 - Road Book Lexicon			P 39
Appendix 4 – ERTF GPS UNIK4			P 40
Appendix 5 – MARLINK User Guide Iritrack			P 42
Appendix 6 - Electronic start procedure at Selective Sections (SS)			P 43
Appendix 7 - FIM Riders' insurance information			P 44
Appendix 8 - Sportity Apps			P 47



FIM 080.1 GENERAL

2025 SR 080.1.4. 1. Support races

There are no support races.

FIM 080.2 OFFICIALS AND PROCEDURES

2025 SR 080.2.4. 1. FIM International Jury & Senior Officials

FUNCTION	LAST NAME, NAME, NAT.	NAT. FED / FIM
FIM Jury President	WULVERICK Jean-François (FRA)	FRMM / FIM 14288
1 st Jury Member, FIM	DYKES Gillian (BWA)	MSA / FIM 16457
2 nd Jury Member, FMNR	JONES Gary (GBR)	EMSO / FIM 15508
W2RC Race Director	MENTAVERI Robert (FRA)	FFM / FIM 15510
	Super Licence	FFM / FIM 4488
Clerk of the Course	DUCROCQ Marc	FFM / FIM 15507
	Super Licence	FFM / FIM 16692
FIM Technical Director	SANTEJ Izak (SLO)	AMZS / FIM 14973
FMNR Chief Technical Steward	SHEHI Violeta (SLO)	EMSO / FIM 16425
Chief Medical Officer	Dr. PETHERBRIDGE Sean (GBR)	EMSO / FIM 50010
Environmental Steward	PREL Andreja (SLO)	EMSO / FIM 17180
Chief Timekeeper	BASILETTI Ludovic (FRA)	FFM / FIM 16720
Results	MATSPORT	
Chief Tracking Officer	MARLINK	-
Chief GPS Officer	ERTF – Cesar Rodrigues (FRA)	-
Chief Marshal	SARWAR Muhammad (IND)	EMSO 5862
Chief Safety Officer	GERAINT Jones (GBR)	EMSO 1459
Deputy Chief Safety Officer	ELLIOT Jones (GBR)	EMSO 3418
Rescue Chief	HURLEY Marc (AUS)	EMSO 15840
Competitor Relations Officer (CRO)	HERVAGAULT Marie (FRA) Mobile: +971 50 421 4017	FFM 044034
Secretary of the Jury	DE LA CRUZ Roselle (PHL)	EMSO 8286
Press Officer / Head of Media	SOSA MEDINA Natalia (ARG)	
Route Director	SPILLER John (GBR)	
Event Director	GENER Bryan (USA)	EMSO 4410



Event Manager	ABOU CHACRA Cesar (LBN)	EMSO 0751
FIA Route Verification Team	MAGNALDI Thierry (FRA) COTTRET Jean-Paul (FRA)	Nominated by FIA
Route Closing	ROSS John Mitchell (GBR)	EMSO 0355
Chief of Communications Deputy Chief of Comm.	WHITAKER Rob (GBR) HUTTON Sheila (GBR)	EMSO 0881 EMSO 0578

Judges of fact: Names, FMN & license numbers will be posted on the official notice board and communicated to all participants and to the FIM International Jury.

2025 SR 080.2.4. 2. Identification of Officials of the Organization

The officials will be identified by the following colored tabard:

Safety Marshals	Yellow
Post Chiefs	Yellow
SS Commander	Yellow
Competitor Relations Officer	Red with text "CRO"
Medical Personal	White with text "Medical"
Timekeeper	Orange with white stripe and text "Timekeeping"
Scrutineer	Black with white stripe and text "Scrutineer"
Media	Green with white stripe and text "Media"

FIM 080.3 SUPPLEMENTARY REGULATIONS AND INSURANCE

2025 SR 080.3. 1. Publication

Emirates Motorsport Organization (EMSO) is organizing the second round of the 2025 FIM World Rally-Raid Championship.

The event will take place in accordance with the relevant legal and administrative requirements of the host country/ies and the relevant FIM documents, including but not limited to the FIM Sporting Code, the applicable FIM Rally-Raid Technical Rules, the FIM Medical, Anti-Doping and Environmental Codes, the FIM Disciplinary and Arbitration Code, the FIM Code of Ethics and the Sporting and Technical Regulations of the FIM World Rally-Raid Championship and the Appendices thereto, as well as the present Supplementary Regulations and any rules and regulations adopted by the FIM International Jury.

The present Supplementary Regulations may not be in contradiction with the FIM Rules and Codes, including but not limited to the Sporting and Technical Rules applicable to the discipline. In the case of a divergence or conflict between these Regulations and any of the applicable FIM Rules and Codes, the latter shall prevail. The National Road Traffic Regulations of the countries the event passes shall apply. Unless provided otherwise by these Supplementary Regulations, the provisions of the above Rules and Regulations shall apply.

FIM Approval: IMN No(s) 801/02 for all categories

FMN Approval: EMSO-2025-004

In case of divergence or conflict of interpretation between the English and French versions, the English text shall prevail. The approved Supplementary Regulations must be published, at least in English, on the FIM website and on the site of the Organizer.

In any matter not covered by the FIM World Rally-Raid Championship Sporting Regulations or



by these Supplementary Regulations, the FIM International Jury shall decide ex aequo et bono. All additional provisions of a technical or organizational nature not contained in these Supplementary Regulations will be announced by means of a numbered, dated and signed addendum. Such addenda will form an integral part of the Supplementary Regulations and shall be posted on the official notice board of the Rally. They will also be communicated during the riders' briefing and the riders will be notified in the shortest time practicable.

2025 SR 080.3. 2. Organizer's name, address and contact details

Emirates MotorSports Organization

Organiser's representative: Bryan Gener

Al Wuheida Street, P.O. Box 5078

Tel: +971 4 296 1122

5078 Dubai, United Arab Emirates

E-mail: entry@emso.ae

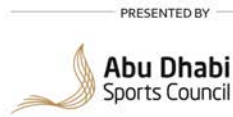
www.abudhabidesertchallenge.com

2025 SR 080.3. 3. Organization Committee

Khalid BIN SULAYEM - Mahir BADRI - Ronan MORGAN - John SPILLER - Adel Kassim SARRIS - Bryan John GENER - Cesar ABOU CHACRA.

2025 SR 080.3. 4. Programme of the Rally

Dates	Actions	Places	Times
Monday 27 th November, 2023	Opening date for entries	Entry Form available on www.abudhabidesertchallenge.com & Sportity General Info	09h00
Thursday 9 th January, 2025	Issuing of the Rally Guide	www.abudhabidesertchallenge.com & Sportity General Info	09h00
Friday 31 st January	Publication of the Moto-Quad Supplementary Regulation	www.abudhabidesertchallenge.com & Sportity Apps	09h00
Friday 24 th January	Closing date for entries with reduce fees.	www.abudhabidesertchallenge.com	23h59
Friday 7 th February	Closing date for entries & to order extra Service		
Thursday 13 th February	Publication of entry list, Documentation and Scrutineering timetable	www.abudhabidesertchallenge.com & Sportity Apps	12h00
Wednesday 19 th February Thursday 20 th February	Service Park opened for setup	Al Ain Hazza Bin Zayed Stadium – Parking Lot	07h00 22h00
Friday 21 th February	Opening of Media Centre & Media accreditation	Al Ain Hazza Bin Zayed Stadium – Media Office	08h00 20h00



Friday 21 th February	Rally HQ & Service Park Open	Al Ain Hazza Bin Zayed Stadium	07h00 22h00
Friday 21 th February	Administrative checks, collection of documents and material including rally safety equipment, tracking and navigation system (in accordance with published timetable)	Al Ain Hazza Bin Zayed Stadium Administration Office	07h00 15h00
Friday 21 th February	Scrutineering of the machines (in accordance with published timetable)	Hazza Bin Zayed Stadium Small Parking Lot Scrutineering Tent	07h30 16h00
Friday 21 th February	First Jury Meeting	Al Ain Hazza Bin Zayed Stadium FIM Jury Room	17h30
Friday 21 th February	Publication of the Riders allowed to take the Start	Website & Sportity	18h15
Sunday 21 th February	Publication of the Starting List for the Ceremonial Start and Prologue (TC0)	Website & Sportity	18h30
Friday 21 th February	Pre-Rally Press Conference	Al Ain Al Jahili Fort	19h00
Friday 21 th February	Mandatory Competitors' Briefing & Medical Briefing	Al Ain Al Jahili Fort	20h00
Friday 21 th February	ERTF & MARLINK Safety Briefing for new riders	Al Ain Al Jahili Fort	After General Briefing
From 23 rd to 26 th February	Daily Briefing	Podium Mzeer'ah Bivouac	19h00
Saturday 22 nd February	Rally HQ & Service Park Open	Al Ain Hazza Bin Zayed Stadium	07h00 22h00
Saturday 22 nd February	Road Section 25 km – 1 st Bike Prologue (TC 0) – 1 st Bike	Al Ain Hazza Bin Zayed Stadium Jebel Hafit Desert Park	TBC 10h00

Saturday 22 nd February	Publication of the Prologue Classification	Sportity Apps	15h00
Saturday 22 nd February	Ceremony Start including the selection of starting position for Leg 1 (Top 10 riders)	Al Ain Hazza Bin Zayed Stadium In front of the stadium	18h00 21h00
Saturday 22 nd February to Wednesday 26 th	Jury Meeting According to Jury President's decision	Al Ain - Hazza Bin Zayed Stadium, FIM Jury Room, and Mzeer'ah Bivouac, FIM Jury Portacabin	TBC
Saturday 22 nd February	Publication of the Starting List for Leg 1	Sportity Apps	20h00
Sunday 23 rd February	Road Section from Exit of the Bivouac – 1 st Bike LEG 1	Hazza Bin Zayed Stadium DSS – 1 st bike	TBC TBC
From 23 rd February to 26 th	Opening of the Media Centre	Media Centre Mzeer'ah Bivouacs	09h00
Sunday 23 rd February to 26 th	Publication of the results of the day Publication of start list For next day	Website & Sportity Apps	19h00
Thursday 27 th February	Finish of the Rally, Ceremonial Finish & Parc Ferme 1 st Bike expected	Abu Dhabi Road Section including Podium Safety Equipment back before to enter Park Ferme	First bike TBC
Thursday 27 th February	Final Technical Inspections	Abu Dhabi Parc Ferme	13h00
Thursday 27 th February	Final Jury Meeting	Abu Dhabi FIM Jury Room	15h00
Thursday 27 th February	Publication of Provisional Final Classification	Website & Sportity Apps	16h00
Thursday 27 th February	Publication of the Official Final Classification Opening of the Parc Ferme	Website & Sportity Apps	16h30
Thursday 27 th February	Prize-giving Ceremony	Abu Dhabi	19h30



Official Notice Board

There will be no physical Official Notice Board at the Rally HQ.
The Official Notice Board is the SPORTITY Application on mobile phones and tablets.
Digital Notice Board (DNB): Code: ADDC25FIM and General Info 25ADDCINFO

The Sportity App can be downloaded from Google Play or AppStore.
Download from AppStore: <https://apps.apple.com/ee/app/sportity/id1344934434>.
Download from Google Play: <https://play.google.com/store/apps/details?id=com.sportity.app>
"Push" notifications show any new document that is posted on the Digital Notice Board.

2025 SR 080.3. 5. Access and contacts for RALLY HQ and Bivouacs

1. Location of Rally HQ and contact details HAZZA BIEN ZAYED STADIUM

Nearest airport: Abu Dhabi International Airport, AUH (40 minutes)

Name:	Mamdouh Mousa	
Street:	Al Tiwayya – Jaffer Obaid, Abu Dhabi	
Post code, city:	Al Ain	
Phone and fax:	+971 50 994 4102	Rally HQ
E-mail:	info@emso.ae	
Rally HQ in operation:	21 - 22 February	07h00 – 22h00
Service Park in operation:	19 – 22 February	07h00 – 22h00



Rally HQ

2. Location and contact details MZEER'AH BIVOUAC

Name:	Cesar Abou Chacra	
Street:	Al Ma'arid St.	
Post code, city:	Mzeer'ah	
Phone and fax:	+971 56 204 3011	
E-mail:	cesar@emso.ae	
Rally HQ in operation:	23 - 26 February	07h00 – 22h00
Service Park in operation:	23 - 26 February	07h00 – 22h00



Mzeer'ah

3. Location and contact details ABU DHABI BIVOUAC – RALLY HQ

Name:	TBC	
Street:		
City:		
Phone:		
E-mail:		
.		
Rally HQ in operation:	27 February	07h00 – 22h00
Service Park in operation:	27 February	07h00 – 22h00

FIM 080.4 ENTRIES

The Organizer cannot be responsible for infections that may occur during 2025 ADDC. Each participant personally assumes the risks linked by traveling to and participating in an event of this type and exonerates the organization of any medical situation that may arise from their participation.

2025 SR 080.4. 1. ADDC Entry procedure

Entries should be made using the official forms available on the website www.abudhabidesertchallenge.com



Anybody wishing to take part in the Event must send the entry form, duly completed, to the secretariat of the Event (entry@emso.ae) along with the entry fees and copy of all the documents requested.

Any person wishing to take part in the 2025 Abu Dhabi Desert Challenge must send to the Secretariat the signed entry application accompanied by the amount of the entry fee that will be increased by 50% for the riders/teams not accepting the optional advertising of the Organizers.

The entry fee is valid to 23:59 on the 7th of February.

Up to the time of the administrative checks, the rider shall be free to replace the motorcycle entered. If a motorcycle does not correspond, in its configuration when presented for the technical Controls for Scrutineering, to its entry category, the motorcycle concerned may, on a proposal by the Technical Stewards, be transferred by the International Jury to another category.

[2025 SR 080.4. 2. Customs obligation – ATA Carnet](#)

ATA CARNET IS COMPULSORY FOR TEMPORARY IMPORTATION IN THE UAE UNDER EMSO EVENTS.

10 DAYS BEFORE the goods leave for the UAE, the Competitors need to send to the Organization:

- A copy of the ATA CARNET (signed by the authorities of the country of the Competitor) will be requested by EMSO to prepare the temporary customs documents and facilitate the temporary import with the Shipping Agents. **NO OTHER DOCUMENTS WILL BE ACCEPTED.**

BEFORE TO ENTER THE VEHICLES IN UAE, THE ORGANIZER NEEDS TO RECEIVE THE ENTRY FORM COMPLETED WITH ALL THE DETAILS OF THE COMPETITOR AND THE VEHICLE WITH THE REGISTRATION CARD OF THE VEHICLE AND THE INSURANCE IF THE VEHICLE IS USED ON THE ROAD BEFORE AND AFTER THE RALLY.

AS SOON AS the goods are loaded:

- A copy of the FINAL AIR WAYBILL (transportation by air) or BILL OF LADING (transportation by sea) and a copy of the vehicle registration need to be attached with the ATA Carnet.
- ENTRY IN UAE AFTER DAKAR:

The vehicles must be registered for 2025 ADDC before to enter to UAE. The copy of the vehicle registration must be attached with the entry form.

The company nominated by EMSO will support with the formalities (see contact in the Rallye Guide).

If the Competitors / Teams used their own Cie, the name and contacts details must be sent to the organizer.

REMIIND: According to the UAE rules, the OVERSEAS vehicles must be insured in UAE if they are used on the road.

The European green card doesn't cover the vehicles in the GCC area.

The Overseas vehicles registered for 2025 ADDC will be cover by the Organizer insurance for roads from 19 to 29 of February only.

[2025 SR 080.4. 3. Team entries names](#)

REMIIND: According to the FIM Regulation, only the name of the Team with a valid 2025 FIM Team License will appear on the official entry lists, official's documents, Press release and official results during the event.

The Competitors need to apply directly to FIM for a 2025 Team license.

Contact: FIM Licencing Depatment Email: licences@fim.ch

For UAE Competitors, Competitors can apply directly with EMSO. Email: licence@emso.ae

[2025 SR 080.4. 4. Services vehicles / Service Crews entries Conditions](#)

Download the Service Vehicles & Service Crews entry form on the website.

When complete, please forward by email to: entry@emso.ae



All the Service Vehicles and Service Crews need to be registered.

A copy of the passport for each Service Crews member and the copy of the driving license of the driver of the vehicle are requested.

The type of Service vehicles is free.

Trailers, semi-trailers trucks, motorhomes, buses and campers are allowed at the Bivouac.

A color copy of the vehicle registration (both side) is compulsory and needs to be sent with the entry form.

IMPORTANT

If the service vehicle is an overseas vehicle, the registration card of the vehicle needs to be sent with the entry form with all the documents of shipping: airway bill (Transport by air) – Bill of lading (Transport by sea), ATA Carnet, etc.



OVERSEAS Service Vehicles

Please note that the overseas vehicles are not insured in UAE outside of the dates of the rally. If the vehicles are used on the road in UAE before or after the rally, the Competitors is responsible to insure his vehicles according to the temporary importation rules.

Temporary Importation for vehicles coming from Saudi Arabia

The customs formalities will be prepared for all the vehicles registered for ADDC 2025.

It's compulsory to register the vehicles before to enter in UAE.

Rental vehicle: Please note that UAE rental vehicle is on your own responsibility. Please check with the rental agency.



TRAVEL / VISA – See Rallye Guide

[2025 SR 080.4. 5. Entry fees for Rider, for Bike or Quad](#)

The entry application will only be accepted if accompanied by the total entry fees.

CONDITIONS FOR UAE

Definition of UAE Entry: To be eligible for UAE entry rates, the Rider needs to be in possession of a UAE Passport or relevant UAE residence visa valid for at least six months.

In addition to a FIM Competition License issued by EMSO.

If the riders rent a Bike or Quad outside UAE, the UAE rates will be applied.

	MOTO - QUAD	
	UAE (AED)	Overseas (USD)
✓ Include – X not include (See Rally Guide)		
Tracking and Timing (MARLINK) - *A deposit of €1500 needs to be lodged @ Documentation for the safe return of equipment	X	X
Navigation and Sentinel (ERTF) - *A deposit of €1,700 needs to be lodged @ Documentation for the safe return of electronic Road-Book	X	X
Public Liability Insurance	✓	✓
3rd Party (Off Highway) Insurance		
3 rd Party (On Highway) Insurance	X	✓
Medical / Hospitalization / Repatriation Insurance	X	✓
Wristband for Bivouac catering and accommodation (Desert tent only)	1	1



Fuel (From Feb 25 th to March 2 nd in Service Park)	✓	✓
Entry Fees with discount up to January 24 th , 2025	9 399	4 049
Entry Fees until closing date February 7 th , 2025*	10 399	4 499

*Entry fees valid until 7th February, 2025. Payment done after this date or at Documentation will be increase of 10%.

All entries MUST be submitted to entry@emso.ae and a copy of the bank transfer needs to be attached.

 VAT of 5% is INCLUDED in the Entry Fee.

A confirmation of the entry and a summary payment form will be sent by the organizer to all entries registered.

Should an Invoice be required, please complete the invoicing information and return the summary form by e-mail to rocelle@emso.ae.

[2025 SR 080.4. 6. Entry fees for Service Vehicle & Service Crews](#)

Each service vehicle and Service crews needs to be registered to be allowed to enter to Service Park and to the Bivouacs.

Only vehicles with valid door plates from the event according to their type will be permitted in the bivouacs.

All Competitors, Service Crews, Media, Officials and Organization personnel will all be identified with colored wristbands that they will receive at Documentation.

For service vehicle and service crews attending the event, the following fees will apply:

Item	Cost (AED)	Cost (USD)
Vehicle Pass AUTO (GVW up to 3000kgs): Rally Plate No. (Access to Bivouacs + Service Roadbook)	1757	479
Truck Pass (GVW over to 3000kgs): Rally Plate No. (Access to Bivouacs + Service Roadbook)	3487	949
Crew UAE BASED: Catering Wristband for all event days (1 person)	2387	-
Crew OVERSEAS: Catering Wristband for all event days with repatriation insurance (1 person)	-	729

Entry fees are valid to 10th February 2025 and need to be paid before 25th February 2025. Payment done at Documentation will be increase of 10%.

All entries MUST be submitted to entry@emso.ae and a copy of the bank transfer needs to be attached. A color copy of the vehicle registration (both sides) is compulsory and needs to be sent with the entry form.

A copy of each passport needs to be sent with the Service Crews form and the copy of the driving licence of the crews allowed to drive the vehicle.

[2025 SR 080.4. 7. Payment details](#)

The entry fee for Overseas Competitors, as laid out in these Regulations, is inclusive of Repatriation and Medical insurance.

A payment summary form will be sent to you upon receipt of your entry.



According to your invoice, you must do the bank transfer on the correct BANK ACCOUNT

- AED BANK ACCOUNT for invoice in AED currency.
- USD BANK ACCOUNT for invoice in USD currency (Compulsory for Overseas).

Account Name: EMIRATES MOTORSPORT ORGANIZATION
Account Number: 101 5664 7808 01 (AED Account)
IBAN: AE43 0260 0010 1566 4780 801

Account Number: 102 5664 7808 02 (USD Account)
IBAN: AE51 0260 0010 2566 4780 802
Swift Code: EBILAEAD

Bank Name: Emirates-NBD
Bank Address: PO BOX 777 Baniyas Rd. Deira Dubai, UAE

Please ensure that the Team's or rider name and account holder are included as reference on the bank transfers.

Please email to rocelle@emso.ae a copy of the bank transfer for reference and reconciliation purposes. The registration form will only be accepted if accompanied by the correct entry fees. Please note that VAT of 5% is included in the entry fee. Should you require an invoice, please provide correctly captured invoicing details and the payment summary form will be updated.

[2025 SR 080.4. 8. Abu Dhabi Desert Challenge Entry Incentive](#)

To encourage greater women entries, it has been agreed that any single women motorcycle entry may be eligible for 25% off the published entry fee. This discount may not be combined with any other discount.

Abu Dhabi Desert Challenge & Dubai International Baja (Nov. 2025) Incentive

To encourage greater entries at the two international events in the UAE, it has been agreed that any competitor participating in the two events in (2025 Abu Dhabi Desert Challenge and 2025 Dubai International Baja) will be entitled to a 50% discount on the entry fee for the Dubai International Baja event (service and media fees are not included).

This refund of 50% of the entry fee will only be refunded once the competitor has been confirmed to start both events. The refunds will be processed by the EMSO accordingly.

This discount is applied upon the competitor, not the vehicle. For example, a competitor who does each of the events in a different vehicle will be entitled to a discount, while one vehicle which is used by a different competitor on each event will not be entitled to a discount. Crews will be allowed to change co-drivers between events without it affecting their discounts.

PLEASE NOTE THAT THE DISCOUNT DOES NOT APPLY TO ANY ADDITIONAL RELATED COSTS, I.E. INSURANCE, SERVICE CREW REGISTRATION, ETC.

[2025 SR 080.4. 9. Refunds](#)

The Organizer will reimburse the entry fees, minus a variable retainer, to competitors who were unable to participate in the event for the reason of force majeure, subject to the written application to the Organizer. The deduction will be:

- 25% of the entry fee for the requests received until 60 days before the administrative checks.
- 50% of the entry fee for the requests received less than 60, but until 30 days before the administrative checks.
- 100% of the entry fee for the requests received less than 30 days before the administrative checks.

All the amounts will be refund maximum one month after the event.



2025 SR 080.4. 10. Entry refusal – Withdrawal – No show

The Organizing Committee reserves the right to refuse the admission of a rider without explanation. In that case the entry fees will be reimbursed.

2025 SR 080.4. 11. Cancellation or rescheduling of the event

The entry fees will be reimbursed in case the event is cancelled or will be consider as a credit for a rescheduled event according to the writing decision of the competitor send to the Organizer.

FIM 080.5 INSURANCE

2025 SR 080.5. 1. Public liability cover

The entry fee includes cover for civil liability of the Competitor from 21st February 2025 to (and including) 27th February 2025.

Only Competitor vehicles are covered for Civil Liability towards Third Parties (Road Legal), from (and including) 19th February 2025 to (and including) 29th February 2025.

The insurance company: Dubai National Insurance & Reinsurance P.S.C.

Contract no.: 09/571/58C/2025/50.

This cover provides for a maximum liability, in respect of any one claim or series of claims resulting from one accident of AED 38,888,000 (USD 10,581,800).

Damages to rally and/or service cars as well as the liability of a crewmember towards other crewmembers are not covered by the insurance provided by the Organizers.

Contact:

Deepak Nanda

ANIB

Phone: 600 5 25502 M.: +971 50 398 3023

Fax: +971 4 388 0770

Address: 6th floor offices, Al Ghazal Office Complex
Satwa, Dubai, United Arab Emirates

Web: www.anib.com email: deepak@anib.com

2025 SR 080.5. 2. Overseas & GCC entries Cover

An accident & Sickness Emergency Medical and Repatriation expense is included in the entry fee to a level of AED 626,000 (USD 170,000 / EUR 159,000) with an excess of AED 15,000 (USD 4087).

1. Search and rescue costs

The assistance and search and rescue costs are borne by the local rally organiser.

2. Medical expenses

The medical expenses are borne by the rally local organiser up to EUR 10,000.

3. Medical evacuation (hospital to hospital) and medical repatriation

The organisation and costs are borne by the rally local organiser up to EUR 40,000.

2025 SR 080.5. 3. Declaration in case of accident

In case of an accident, leading to an insurance event, the competitor or his representative must make a written statement to the Clerk of the Course, the Competitors Relations Officer, or directly to the Organizer, within 24 hours. This statement must mention the accident circumstances, the names and addresses of the casualties, as well as contact. Any breach of this rule will be reported and may result in a penalty, at the discretion of the Jury International.



Nevertheless, if a driver taking part in the rally is involved in an accident in which a member of the public sustains physical injury, the driver concerned must report this to the next radio point as specified in the road book and point the place on the route. If he fails in observing this rule, the Stewards may impose a penalty to the responsible crew, which may go as far as disqualification.

[2025 SR 080.5. 4. Individual accident insurance](#)

It is highly recommended to take out additional individual accident insurance, which may allow the Competitors to cover additional costs, with an insurance company of their choice.

[2025 SR 080.5. 5. Insurance included in your FIM License](#)

Competitors with a valid FIM License are covered for Emergency Medical treatment as per the FIM Riders' insurance information enclosed (see appendix 7).

[2025 SR 080.5. 6. Medical insurance rules in UAE](#)

It is important for all Competitors to fully understand the situation with regards to the Medical expenses according to the UAE rules.

In the event that "you" the registered competitor have an accident during the event and requires medical attention in a hospital then the following procedure needs to be followed:

- On release from Hospital any Medical costs **MUST** be settled by you or third party before leaving the hospital. The hospitals have been informed of this arrangement.

In case of accident, a claim form will be sent to you or third party by email, which needs to be completed along with the Hospital report and receipt.

Once received and verified, then these documents are forwarded onto our Insurance Company for review and process.

Please note that there is an excess applicable of USD 2500 to all insurance claims.

By the fact to sign your entry form, you fully understand the above, and that Medical costs must be settled before leaving the hospital.

The Organizer is not responsible for any settlement of the bills.

[2025 SR 080.5. 7. Road insurance for Overseas Service Vehicles](#)

Competitors are reminded that Service Vehicles that are registered overseas, entering by boat, by air or by road, are not insured in the UAE outside the date of the rally.

Competitors are furthermore reminded that UAE Rental Vehicles and all insurance related obligations are the sole responsibility of the competitor.

FIM 080.6 ENTERED RIDERS

[2025 SR 080.6. 1. Entry conditions for the Rider](#)

- The Organizing Committee reserves the right to refuse the entry of a rider.
- To be registered in 2025 Abu Dhabi Desert Challenge, any person from any country must hold an FIM Rally-Raid World Championship license released by his own National Federation in accordance with art. 70.2.1 of the FIM Sporting Code and Art. 09.1 of the FIM Medical Code.

To obtain this license from his national federation, the rider must undergo and successfully pass an echocardiogram, once in his lifetime and an exercise tolerance test (ECG) valid for three years.



62 801 01	FIM Rally-Raid World Championship - RallyGP	415 - Veterans, 423, 426, 831, 470, 877, 801 - RallyGP, 801 - Veterans, 801 - Women, 801 - Quads, 801 - Juniors2, 814 - 450cc, 814 - Women, 814 - Quads, 814 - Juniors, 832, 833, 850, 890, 891, 774 - E1, 774 - E2, 772 - EX3, 772 - EX3W, 801 - Rally2, 893, 801 - Rally3, 772 - EX2, 814 - Veterans, 803 - Moto, 418 - A, 834, 835, 836, 801 - Juniors3, 772 - EX3J, 774 - E1W, 774 - E1J, 774 - E3, 415 - Silver Vase, 415 - Women, 418 - B, 418 - C, 418 - X, 418 - O, 415 - A, 415 - B, 415 - C, 415 - X, 415 - O, 772 - EX1, 803 - Vintage, 803 - Moto Women, 803 - Moto Veterans, 822, 757, 803 - Quads Veterans, 776 - Men, 776 - Women, 840, 837, 838, 839, 830, 814 - Trails
62 801 02	FIM Rally-Raid World Cup - Rally2 & Quads World Cup	415 - Veterans, 423, 426, 831, 470, 877, 801 - Veterans, 801 - Women, 801 - Quads, 801 - Juniors2, 814 - 450cc, 814 - Women, 814 - Quads, 814 - Juniors, 832, 833, 850, 890, 891, 774 - E1, 774 - E2, 772 - EX3, 772 - EX3W, 801 - Rally2, 893, 801 - Rally3, 772 - EX2, 814 - Veterans, 418 - A, 834, 835, 836, 801 - Juniors3, 772 - EX3J, 774 - E1W, 774 - E1J, 774 - E3, 415 - Silver Vase, 415 - Women, 418 - B, 418 - C, 418 - X, 418 - O, 415 - A, 415 - B, 415 - C, 415 - X, 415 - O, 772 - EX1, 803 - Quads, 803 - Vintage, 803 - Moto Women, 803 - Moto Veterans, 822, 757, 803 - Quads Veterans, 776 - Men, 776 - Women, 840, 837, 838, 839, 830, 814 - Trails
62 801 11	One Event: FIM Rally-Raid World Championship - RallyGP	801 - RallyGP
62 801 12	One Event: FIM Rally-Raid World Cup - Rally2 & Quads World Cup	801 - Veterans, 801 - Women, 801 - Quads, 801 - Juniors2, 801 - Rally2, 801 - Rally3, 801 - Juniors3

- The rider must obligatorily be a holder of a valid driving license corresponding to the type and capacity of his/her Bike, Quad.
- ONLY FOR UAE Citizens and UAE Citizens holding a valid resident visa's:
Following the UAE laws, a person between 16 and 18 years old can obtain a driving license to ride a bike or a quad in UAE. EMSO can process a 2025 FIM License for the event for eligible people. The procedures for holding a competition license are the same as any other competition license issued by the EMSO.
To complete the entry for the event, the competitors' parents must sign the entry form of the event and submit a signed waiver stating their no-objection to enter the 2025 ADDC.
- Any copy or statement of loss or theft of the previously mentioned documents will not be accepted, as it does not legally substitute the possession of a driving license conforming to the capacity of the motorcycle.
- Any rider who is replaced by another one on his motorcycle during the race will be excluded from it, as well as the motorcycle of this last-mentioned driver.
- The Rider is responsible of the behavior of his mechanics; his assistants, his manager, his Press staff and any infringement to the regulations will be borne by the Rider.
- The maximum number of motorcycles accepted is 100.

The Rider enters the 2025 Abu Dhabi Desert Challenge at his own risk, being fully aware of the danger associated with the event. For this reason, the rider relieves the Organizer, the FMNR and the FIM from any penal and/or civil responsibility in case of physical and/or material damages incurred as a result of his participation in the event. He/she agrees to indemnify, protect and hold harmless the Organizers, the FMNR and the FIM and anyone acting on their behalf or under their authority, including but not limited to their representatives, employees, agents, officials and volunteers, from and against any and all liability, penal and/or civil, loss, expense or claims of whatsoever nature, including but not limited to third party claims, relating to injury to persons, including death, or loss or destruction of or damage to property arising in connection with his/her participation in the 2025 Abu Dhabi Desert Challenge.

By the fact to sign the entry form and the Administrative/Scrutineering carnet, the Rider fully understand and accept the above.



[2025 SR 080.6. 2. Cover Images – Image rights](#)

- The Riders & his Team recognize that the 2025 Abu Dhabi Desert Challenge is a promotional operation from which they can benefit by the coverage they acquire there.
- The Organiser holds all the rights necessary for the production and retransmission, by all means and, in all mediums, all over the world, images and sounds related to this event.
- In order to allow the widest possible dissemination and promotion of the 2025 Abu Dhabi Desert Challenge, any person participating in the Rally is subject to the rules and acknowledges that his participation in the event authorizes the organizer and his rights holders, or others having cause to reproduce and represent, without remuneration of any kind, his names, voice, image, biography and more generally his sports performance in the framework of the Rally 2025 as well as the brand/s of its suppliers, manufacturers and sponsors, in any form, on any existing or future medium, in any format, for any communication to the public worldwide, for any use including for advertising and / or commercial purposes without any other limitation than those referred to below, and for the duration of the protection currently granted to these holdings by the laws or regulations, the judicial and/or arbitral awards from any country as well as current or future international conventions, including any extensions that may be made to this duration.
- The participants concede to the Organiser, in name and on behalf of their sponsors and/or the manufacturer of their vehicle, the right, as part of any exploitation derived from the event, including sponsors and media of the event, to reproduce in whole or in part at the discretion of the organizer on any existing or future support, worldwide, without any limitation, for the most longest duration legally recognized by both UAE and foreign laws, current or future international conventions including for any extensions that may be made to this duration, names, trademarks or logos of said sponsors and / or visual machines/vehicles.

- As a reminder, aerial images (drone/helicopter etc.) are strictly forbidden for the 2025 Abu Dhabi Desert Challenge outside the official TV production of the organization.

The shooting of images of competitors participating in the Rally, whatever the means used and the purpose in which they are filmed, are subject to prior written authorization from the organizer.

For this purpose, written applications must be sent no later than 7th of February 2025 preceding the start of the event.

[2025 SR 080.6. 3. Drone\(s\)](#)

Alert! Currently all commercial and private drone use has been suspended!

Drones need approval from the General Civil Aviation Authority to operate in the UAE. See the link below for more details and access to the correct forms you will need to apply for such approvals. Any media personnel must submit these GCAA approvals before collecting their accreditation at the event. If media personnel are found not to be in compliance of these GCAA regulations regarding the approved use of drones. They risk their accreditation being confiscated and access to the event revoked.

<https://www.gcaa.gov.ae/en/Pages/UASRegistration.aspx#TYPEOFUSERS>

Also visit the below link to the General Civil Aviation Authority website to review a map of the "No Fly Zones" in the UAE.

<https://www.gcaa.gov.ae/en/Pages/noflyzone.aspx>

[2025 SR 080.6. 4. Particular conditions of visited countries](#)

See Rally Guide on the website.

FIM 080.7 MOTORCYCLES, CATEGORIES AND OTHER SPECIFICATIONS

2025 SR 080.7.1. 1. FIM Categories, Groups/classes admitted for 2025 ADDC

1. Category RallyGP – FIM World Rally-Raid Championship

- Moto-Rally (Up to 450cc)
- Rider: Experienced competitors only. A list of eligible riders is published by FIM website.
- RALLYGP category is open for manufacturers.

2. Category Rally2 – FIM World Rally-raid Cup

- Moto-Rally (Up to 450cc)
- Rider: open to all, except rider registered on RallyGP list

3. Category Quad - FIM World Rally-Raid Cup Quad

- Quad according to the FIM Technical rules. Maximum speed 130 km/h
- Rider : Open to all

Trophies for RALLY2:

- WT: Women's Trophy
- JT: Junior's Trophy (less than 25 on 01/01/2025)
- VT: Veteran's Trophy (45 minimum on 01/01/2025)

ADVENTURE TROPHY "MALLE MOTO" will be introduced by the Organizer for "Amateurs competitors" in the category RALLY2 and Quad, only if there are more than 5 entries registered on 07/02/2025.

2025 SR 080.7.1. 2. ROAD TO DAKAR

See regulations annexe 1.

2025 SR 080.7.4. 1. Identification

1 – Number plates & advertising stickers

The Organizer will provide to each rider a set of identification plates comprising 1 front plate and 2 side plates, called number plates and advertising stickers at Documentation.

Size according to FIM rules: Moto-Rally 25 X 18 cm and Quad 28 X 18 cm.

The absence of or incorrect affixing of a racing panel or plate shall result, for each offence noted, in a time penalty as stated in the Supplementary Regulations.

2 – Bib number plates

The Organizer will also provide at Documentation one bib measuring 26 cm x 30 cm, bearing the racing number which should be clearly worn on the rider's back during the Rally.

The race bib cannot be cut and/or modified, not hidden by anything like a 'camel bag' and shall always be visible.

Before the start of each stage, the simultaneous absence or incorrect affixing of at least two racing plates or bib shall result in disqualification from the Rally.

In case of damage, the Rider must inform the Competitors' Relation Officer, who will provide a replacement in exchange for the damaged item.

3 – Wristband

An identification wristband will provide identification for the rider. All default noted by an official will result in penalties equivalent to 10% of the entry fees.

In case of damage to the bracelet, the rider must inform the Competitors' Relation Officer, who will provide a replacement in exchange for the damaged item.

2025 SR 080.7.5. 1. Advertising

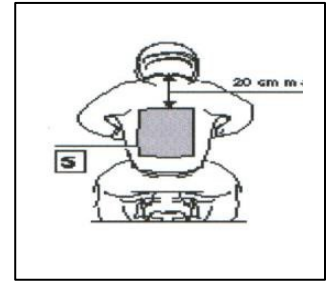
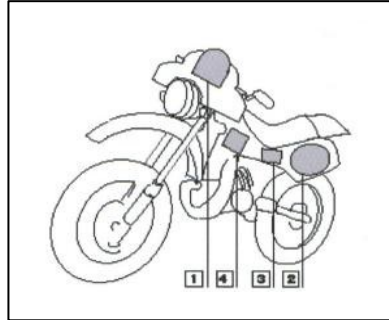
Competitors shall be free to affix any advertising on their motorcycles provided that it:

- a) Is authorized by the FIM Rules and the laws of the UAE.
- b) Is not contrary to public decency and customs,
- c) Does not overlap on those areas that are reserved for the plates.

Note: The advertising of alcohol, or related products, politics, etc. is illegal.

1. Layout of the identification & advertising

- 1. Front plate
- 2. Two side plates
- 3. 2 advertising panels
- 4. 2 advertising panels
- 5. Race bib.



These areas are for the Organizers and can be bought back at a cost of US\$ 1,500

- An area 12cm x 12cm on each side of the front of the tank
- An area 12cm x 8cm on each side at the back of the motorcycle, on a vertical surface. It is the rider's responsibility to check that none of the Organizers advertising areas are missing, masked or damaged.

It is the rider's responsibility to ensure that the position of their bibs allows complete visibility of the rally number.

A financial penalty will be imposed if the above is not complied with.

2. Obligatory organiser's advertising

Advertiser	Field of activity
Rulers Representative Court Al Dhafrah Region	Government Authority
Abu Dhabi Sports Council	Sports Council in Abu Dhabi
Abu Dhabi National Oil Company (ADNOC)	Petrol Supplier
Emirates Motorsports Organizer (EMSO)	FMN / Organizer
General Command of the Armed Forces	Government Military
Al Ain Water	Water Bottle Supplier



3. Optional organiser's advertising

Toyota - Al Futtaim	Vehicle Manufacture
Abu Dhabi Police	Police Authority
Abu Dhabi Department of Health	Government Health Authority
Abu Dhabi Municipality (Al Dhafrah Region)	Government Authority
Abu Dhabi Distribution Company	Utility Company
Abu Dhabi Sports TV	TV Channel and Production
Abu Dhabi Aviation	Aviation Service Provider
National Ambulance	Medical Service Provider
Cultural Program and Heritage Festival Committee – Abu Dhabi	Cultural/Heritage Event organizer
Abu Dhabi Ports	Government Port Authority
Tadweer	Waste Management

FIM 080.8 TECHNICAL INSPECTION & ADMINISTRATIVE CONTROL

2025 SR 080.8.1 1. Administrative obligations

General documentation checks will be made prior to the start of the Rally at documentation on Friday 21st February 2025 at Hazza Bin Zayed Stadium – Administrative Office. Each Rider needs to be present, according to the published times schedule for Administrative & Technical checks. The Administrative and Scrutineering schedule for all competitors will be posted on the website and on the Official Notice Board and will be also writing to each scrutineering book given to the competitor at documentation.

EACH RIDER needs to present (Original documents):

- 2025 FIM Team Licence (if applicable)
- 2025 FIM Rally-Raid World Championship license according to his category (Annual or One event).
- Passport (and visa for nationalities who require a visa in advance of travelling)
- A valid driving license corresponding to the type and capacity of machine used.
- A parent's authorization if the Rider is leaving in UAE and less than 18 years old.
- Gives a mobile telephone number valid in UAE to be contacted directly during the race.

Documents for the bike or Quad

- Registration documents for the machine and Certificate of ownership
- Letter of authority if a motorcycle or quad does not belong to the registered competitor
- Motorcycle insurance documents valid in UAE.



2025 SR 080.8.2 1. Preliminary Technical Inspection

EACH MACHINE (Bike / Quad)

Only those riders who have successfully completed the Documentation / Administrative checks may present their Machine at Scrutineering on Friday 21st February 2025 at Al Ain, Hazza Bin Zayed Stadium, small parking lot, Scrutineering tent in accordance with the published time schedule.

Competitors are requested to abide by their due time – penalties will be given if late. All identification and advertising stickers must be in place on the machine when it is submitted to the scrutineers.

Failure to report to Scrutineering at the due time will result in a cash penalty of AED 1,000.00.

Competitors must also present the following equipment for inspection:

- Homologated Helmet
- Inflatable jacket/Airbag and other protections
The inflatable jacket is compulsory for all the bikes/Quad categories.
During the Scrutineering, the Competitor must present his spare cartridges.
(3 sets of replacement) and have them marked by the technical officials.
- Riding kit
- GPS / Sentinel
- Tracking Device(s)
- Signaling kit
- Additional water ration Camelback (3 liters)
- Spare engine for marking (if applicable) with a separate gearbox connected to it
- Motorcycles must pass the noise control test, carried out according to Art. 01.79 of the Cross-Country Rallies Technical Rules, during the scrutineering and marked by the organizer. The maximum limit of sound level, using 2 meters max method is fixed at:
Checks before and during the race 117.0 dB/A
- Medical kit

REMEMBER: The rider's name needs to be marked on his/her helmet and on each side of the machine.

Category 1: Competitors must declare during the technical inspection the make and model of the rear tyre used throughout the Rally. Only this type of declared tyre may be used by the competitor.

2025 SR 080.8.4 1. Technical Inspection at the end of the event

Place: Abu Dhabi (TBC) – Parc Ferme

Times: 13h00 on Thursday 27th February 2025.

FIM 080.9 FUEL

2025 SR 080.9 1. Fuel at Hazza Bin Zayed Stadium

Diesel, 95-Octane & 98 Octane will be provided from a mobile tanker (via pumps). The mobile tanker will be located outside the Bivouac. Additional details to be published on the DNB.

2025 SR 080.9 2. Refuel at Mzeer'ah Bivouac

Diesel, 95-Octane & 98 Octane will be provided from a mobile tanker (via pumps). The mobile tanker will be located outside the Bivouac. Map with location to be published on Sportity.



[2025 SR 080.9. 3. Refuel at Al Oua Marathon Bivouac](#)

Diesel, 95-Octane & 98 Octane will be provided from a mobile tanker (via pumps). Map with location to be published on Sportity.

[2025 SR 080.9. 4. Fuel on road sections](#)

On road sections where service stations can supply Super 95 or 98 fuels it is the responsibility of the riders to fill up at their own expense. Fuel stations will be in the road book.

Transport of fuel in any other way than in fuel tanks designed for this purpose is forbidden. Similarly, transport of objects, parts, and tools... susceptible to cause injuries to a rider (backpack, belt...) is forbidden. Failure to respect this rule will result in the start being refused.

REMOTE Refuels

98 Octane fuel will be supplied by the Organiser at Remote Refuel Locations on the special stage (to those applicable vehicles).

FIM 080.10 RALLY HEADQUARTERS

[2025 SR 080.10. 1. Rally Control EMERGENCY NUMBER](#)

The Rally Control team can be reached at any time in an emergency ONLY on

00971 (0)50 875 4750

The emergency number will be written on the ID Bracelet. Misuse of this emergency contact number may be met with a penalty by the Organizers.

FIM 080.11 ROAD BOOK, NAVIGATION AND BRIEFING

[2025 SR 080.11. 1. Official Itinerary](#)

The official route of the Rally is described in the road book given to the competitors and must be strictly followed, on pain of a penalty which may lead as far as disqualification from the rally.

The official itinerary of the Rally is defined by a number of Visible Way Points (WPV) and Hidden Way Points (WPM). All the GPS points will be considered as COMPULSORY passage points.

In any case the competitor can force the GPS to address to another WPT, pushing the "WPT+" or "WPT - "button.

The road book has been composed to indicate the route to follow, some GPS points and the main dangers.

[2025 SR 080.11.2. Navigation Waypoints](#)

	Waypoints	Rayon d'ouverture / Opening Radius	Rayon de validation en mètres / Validation Radius in meters	Pénalité pour WP manqué / Penalty for missed WP
Navigation WP	WPE	Prev (1000 m)	90	15 minutes
	WPN	800 m	200	60 minutes
	WPM	800 m	90	15 minutes
	WPS	1000 m	30	15 minutes
	WPC	None/aucun	300	15 minutes
	WPP	100 m	20 m	2 minutes
	PC	Prev (1000 m)	90	15 minutes
Start Finish Zone WP WP Zone Départ-Arrivée	WPV	open	200	15 minutes
	DSS	Prev (1000 m)	200	Stage Penalty
	ASS	800 m	90	Stage Penalty
	DZ	(1000 m) Prev	90	15 minutes
	FZ	Prev (1000 m)	90	15 minutes
	DN	1000 m) Prev	90	Stage Penalty
	FN	Prev (1000 m)	90	Stage Penalty

Prev (1000 m) = previous waypoint or within a radius of 1000 m if the previous waypoint was missed.

1000 m (Prev): Within a radius of 1000 m or previous waypoint by the shortest distance.

At each waypoint, the odometer must be recalibrated automatically.

[2025 SR 080.11.3. Navigation rules](#)

Throughout the rally, each Rider is responsible for the correct functioning of his GPS, downloaded with the Organization's points. The GPS must be connected to the power source at all times (Liaison & Special).

Each malfunction must be communicated to Clerk of Course or the CRO. Any evidence of manipulation may be penalized as far as disqualification from the rally as determined by the International Jury.

[2025 SR 080.11.4. Electronic Road Book](#)

The Electronic Road book is compulsory for all the riders.

Remind: The only official route is the one in the Electronic Road Book.

The GPS Code of each stage will be display at the Bivouac exit every morning.

RALLYGP riders will be allowed to use a single odometer model, the ICO model or the one provided by ERTF.

Please note:

The addition of any information on the road book, bike and pilot:

- Cap(s)
- Geographic(s) indication(s) that could be useful for navigation
- Distance(s)
- GPS point(s)



Different from the ones already on the road book itself and on the opening notes provided by the Organization are strictly forbidden. Controls will be operated. The road book used by the Rider or the Crew members will have to be given in full upon request at the end of the Special or Road Section to the Marshal or officials in charge of their collection.

Any Rider or Crew who does not respect those rules will be sanctioned by:

- 1st infraction: 3 hours penalty
- 2nd infraction: Disqualification

Any missing or lost road book will be considered as an infraction.

[2025 SR 080.11.8. 1. General & Daily Briefings](#)

It is compulsory for all Riders to attend the First General Briefing (See programme) conducted by the Clerk of Course Auto. A penalty of €200 will be incurred if the Rider is not present.

It is strongly recommended to attend the following daily briefings at 19h00.

[2025 SR 080.11.8. 2. Safety Briefing](#)

A briefing for the Riders where the use of the various safety systems will be presented by MARLINK / ERTF representatives after the General Briefing.

FIM 080.12 ROUTE

[2025 SR 080.12. 1. Forbidden Reconnaissance](#)

Any form of reconnaissance of the route, whether by a Rider himself or any party associated, directly or indirectly, with a Rider is strictly prohibited.

The possession of route notes, other than those issued by the Organizers of the 2025 Abu Dhabi Desert Challenge, or the storage of GPS waypoints from previous years' events is prohibited. Competitors who fail to observe these bans will be refused a Start or will be disqualified from the event. A commercially available map, free of any markings, other than those deduced from the Organizer's Road book couldn't be carried on board a competing vehicle.

[2025 SR 080.12. 2. Private tests](#)

Riders who wish to perform private tests during any part of the year are obliged to notify the Organizers of their intentions, with details of dates/timing and obtain written permission. On application, areas within which it is permitted to test will be advised to the applicant.

[2025 SR 080.12. 3. Traffic regulations](#)

2025 Abu Dhabi Desert Challenge is divided in 5 stages with road sections.

Throughout the duration of the Rally the Riders must strictly comply with the traffic regulations of the UAE and stay on the road book Any competitor who does not comply with these requirements will be penalized according to the FIM Article 80.12.

If the Police stop a Rider, the Rider needs to inform immediately Rally Control. Keep calm.

An Arabic letter will be given at Documentation to show to the Police in case they stop you.

Regardless of the Speed Control Zones, the maximum speed will be limited to 120 km/h and controlled on all Road Sections.

[2025 SR 080.12. 4. Crossing of inhabited areas](#)

- Riders

Along inhabited areas crossed in the liaison sections as well as along the Specials, the speed will be strictly limited as specified by the local sign panels. All areas that are considered dangerous for riders and for local inhabitants will be indicated in the road book.

- Assistance: Service Vehicles

The speed of all assistance vehicles in crossed cities and villages, following the assistance road



book, will be limited as specified by the local sign panels. Overtaking is also forbidden. The Organizing Staff will make controls and the International Jury can decide penalties.

FIM 080.13 STAGES

Distance

Overall distance for Selective Sections (SS): 1164 km

Liaison Sections: 692 km

Total distance of the itinerary: 1856 km

Number of stages: 5 + Prologue

Number of Road Sections: 8

Number of Selective Sections (SS): 5 + Prologue

Average altitude

The average altitude of the total distance of selective sections is 145 m.

Route terrain on Selective Sections:

Gravel/dirt tracks	4,7%
Open desert	62%
Dunes	28%
Other surfaces	5,3%

2025 SR 080.13. 1. Length of Selective Sections (SS)

Prologue:	15 km
Stage 1:	243 km
Stage 2:	228 km
Stage 3:	238 km
Stage 4:	295 km
Stage 5:	145 km
TOTAL	1,164 km

FIM 080.14 PROLOGUE

2025 SR 080.14. 1. Prologue location & procedure

A Prologue will be organized on 22nd February 2025 at 10h00 (First bike).

Distance will be around 15 km. Gravel and hard track.

Location is at Jebel Hafit Desert Park and around 25 km from Hazza Bin Zayed Stadium.

Maximum time: 25'

The 25 minutes will be applied to anyone who does not finish or are not able to start the Prologue.

Each box of the road book and each waypoint needs to be respected and validated. Penalties will be applied for WP missing.

The starting order for the Prologue will be established as follows:

- QUADS in reverse order of racing numbers;
- RALLY2 not classified in the current year's World Cup in reverse order of racing numbers;
- RALLY2 classified in the current year's World Cup in reverse order of classification;
- RALLYGP not classified in the current year's World Championship in reverse order of racing numbers;
- RALLYGP classified in the World Championship of the current year in reverse order of classification.

The result will count for the classification of the event as well as any road penalties related thereto.

The recce of the Prologue is NOT ALLOWED.



FIM 080.15 SELECTIVE SECTIONS (SS)

[2025 SR 080.15. 3. Distance of the Selective sections](#)

The km of each stage will be the same for all the Categories: RallyGP, Rally2, Quads.

FIM 080.17 STARTING ORDER

[2025 SR 080.17.1. 1. Minimum interval between the last Bike/Quad & 1st FIA car](#)

At the start of the stage (Bivouac exit), under no circumstances will a bike/quad rider be allowed to start more than 30 minutes after the theoretical start time of the last bike/quad.

At the start of the Special Stage, a bike/quad rider won't be allowed to start once the first FIA Car in the race has left.

[2025 SR 080.17.3. 1. First Stage](#)

According to 2025 FIM Regulations Article 80.17.3.

[2025 SR 080.17.4. 2. Second and subsequent Stages](#)

The starting order of Stage 2 and the following stages will be established in the order of the scratch classification of the Selective Section, or of the accumulation of the Selective Sections of the previous day.

[2025 SR 080.17.6 1. Collective Start \(Mass Start\)](#)

There will be no mass start.

[2025 SR 080.17.7 Marathon Stage](#)

Stages 3 & 4 will be run as a Marathon stage. The bikes and quads will be in Park Ferme at the end of Stage 3.

At the end of the stage 3, after the refuel of his Bike/Quad, the rider will enter in the Parc Ferme and be allowed to work on his bike or quad. Times allowed: 30 minutes for RallyGP, 1h00 for RALLY2 and QUAD.

In the morning of Stage 4, the Rider will be allowed to enter 10 minutes before his Start Times.

[2025 SR 080.17.8 1. Change in the start order - Repositioning](#)

According to 2025 FIM Rules, Article 080.17.8

The request needs to be given to the Clerk of the Course or to the CRO before 17h00 by the Rider or the Team Manager.

[2025 SR 080.17.9 1. No start or abandon in a Selective Section / Stage](#)

REMI NDER

A rider not present at the start of a Stage and who did not inform the race direction in any manner will be disqualified.

The rider who does not wish or cannot start a Stage must still present himself, be represented by somebody at the start of the Stage or have informed the Clerk of the Course before the start of the Stage. In this case, he will receive a penalty as follows:

- Six (6) hours + Stage Penalty (SP) + Maximum time of the Selective Section + the value of all waypoints not validated.

The rider who starts a stage and then leaves the Stage Selective Section will receive the following penalty:



- Three (3) hours for having left the stage + SP + Maximum time of the Selective Section + the value of all waypoints not validated.

[2025 SR 080.17.11 1. Openers bonus](#)

The stages using the opener bonus will be stages 1, 2, 3, 4 and 5. The last 50 km of each stage will be not considered by the opener bonus.

FIM 080.18 ASSISTANCE, TOWING AND REFUELLING

For 2025 ADDC, the assistance will be permitted only on Stage 5 according to the Service Road book.

[2025 SR 080.18.1 1. Forbidden Assistance](#)

Refuelling

Assistance in the refueling zone during the 20 minutes is forbidden.

Service crews and service vehicles are not allowed to go to the refuelling points.

Assistance is forbidden at the refueling zones and during the Special Stages.

A penalty of 6 hours will be applied to the Rider for any sort of assistance NOT ALLOWED.

Assistance (Service crews and Service vehicles) is ONLY permitted when the assistance route and race route are the same.

[2025 SR 080.18.1 2. Tyres](#)

PADDLES tyres are not allowed for the 2025 Abu Dhabi Desert Challenge.

[2025 SR 080.18.1 3. Transport from Al Ain Service Park to Bivouacs](#)

Organizer's trucks will transport a box containing spare parts, special equipment, two/three tyres and wheels for each private competitor and riders registered in "Malle Moto".

Competitors not registered in Malle Moto should bring their own metal box (max dimension: 80cm x 45cm x 35cm height) identified with their competitor Number. The maximum weight allowed is 60 kg. If you wish to use the Organization's service, please notify the Organization by email to entry@emso.ae before 7th of February 2025.

The truck will be not at the Marathon Stage. "Malle Moto" will stay at Mzeer'ah Bivouac.

Schedule of the EMSO truck

AL AIN – Hazza Bin Zayed Stadium

PICK UP to go to M'zeer'ah Bivouac on 23rd February - Time: TBC

Location: EMSO Malle Moto Logistic Truck in Service Park

MZEER'AH Bivouac

DROP OFF on 23rd February - Time: TBC

Location: EMSO Malle Moto Logistic Truck in Service Park

MZEER'AH Bivouac

DROP OFF to go back to Abu Dhabi on 27th February - Time: TBC

Location: EMSO Malle Moto Logistic Truck in Service Park.



ABU DHABI

DROP OFF on 27th March - Time: TBC

Location: TBC

2025 SR 080.18.1 4. Team personnel / Service Crews

Each competitor is reminded that he/she is jointly and severally responsible for his or her service teams and accompanying persons. It's compulsory to register all the Service Crews.

Any infringements of the regulations, as published by the FIA and the Organizers, that are officially observed, as well as use of unauthorized equipment – whether or not this has a direct or indirect influence on the results or sporting running of the event – will be judged by the Panel of Stewards of the Meeting who will be entitled to decide as far as the disqualification from the event of the competitor(s) involved, directly or indirectly.

The ID bracelet, correctly attached to the wrist of competitors, crew and service personnel, is considered the only authorization to be present in an official location, service area and the bivouac. Personnel must show the ID bracelet at any time on request. A crew receiving assistance in any form from third parties not identified by the wearing of the ID bracelet are subject to a penalty of \$100 and up to and including disqualification.

For any infringement of this rule, a penalty of up to and including disqualification from the event may be imposed by the Jury on the competitor for whom the transgressors are servicing.

2025 SR 080.18.4. 1. Fuel / Autonomy

Each rider is responsible for calculating their fuel range to cover the minimum distance of 250 km for safety reasons a 10% margin is indispensable.

2025 SR 080.18.4. 2. Refueling during a Selective Sections

The neutralization for the refueling will be 20 minutes.

During the Neutralization for refueling, NO intervention on the bike/quad is allowed.

The infringement of this norm will be penalized at the discretion of the Jury, and that may go up to exclusion.

2025 SR 080.18.4. 3. Automatic Control for refueling and neutralizations

The neutralization period for refueling will be virtually controlled by the ERTF device.

After refuelling, the competitor must present himself at the end of neutralisation control marked by a red panel to make a new start, indicated by the end of the countdown on his GPS.

100m before the WP end of NEU, there will be a yellow sign, the competitors will be able to pass this sign only in the last 60 seconds of the time allowed for the NEU.

Approximately 100m after the yellow sign, a red sign will show the point where the WP indicates the end of the NEU.

Stopping at the red sign is mandatory.

Any rolling start will be penalised as follows according to FIM rules:

To stop at the red sign is compulsory. Any rolling start will be penalised with one minute penalty (1 minute).

FIM 080.22 PASSAGE CONTROLS

2025 SR 080.22.3. 1. Passage Control Penalties

All controls must be passed in the order defined by the Road Book.



Competitors are required to stop within the Passage Control Zone to have the Time Card stamped by the PC Controller. Failure to visit any Passage Control will result in a time penalty as in art. 080.22.

- Missing a CP ie missing the WPS: 120'

- Missing stamp at a CP: 5'

The controller at each PC will record the time of entry of each competitor in minutes and seconds. In the event the Special Stage is shortened, due to 'force majeure' the times recorded at the last Passage Control will determine the finish times of that Selective.

FIM 080.24 FIXED PENALTIES (PF) / SPORTING PENALTIES (PS)

2025 SR 080.24. 1. FP and SP value

- A fixed penalty (FP) of 2 hours will be applied to competitors who fail to complete a Section within the Maximum Time Allowed for that section.
- A Stage penalty (SP) of 2 hours will be applied to competitors who miss or fail to complete a Section.
- Maximum number of Stage Penalties for Rally2 and Quad: 1/one
- For RallyGP - at the first Stage Penalty the rider is out of the race.

FIM 080.25 PARC FERME (CLOSED PARK)

2025 SR 080.25 1. Parc Ferme location during the Event

- There is NO Parc Ferme after Scrutineering.
- There is a Parc Ferme after the finish of the Stage 3 "Marathon".
- There is a Parc Ferme at the end of Leg 5, finish of the Rally at Abu Dhabi, for the final Scrutinerring check.

FIM 080.26 SERVICE PARK & BIVOUACS

REMI NDER

Environmental mat flap is compulsory in Service Park, Bivouacs and Parc Ferme. For the Marathon stage, the environmental mat (with the race number) must be given to the Organization with the personal bag. (Times on bulletin no.1).

2025 SR 080.26 1. Abu Dhabi Service Park

See article 080.3.5. for contacts. Location TBC.

2025 SR 080.26 2. Bivouacs at Mizeer'ah

- Location: See article 080.3.5.
- Bathroom and power electricity are at the disposal of the Competitors in the Service area.
- Bottle drinking water is available for Competitors and Service Crews registered at the Bivouac.
- All Teams need to respect social distancing rules when allocating space to setup their service area.
- Access times for service vehicles: Free

Service is only permitted at specific areas designated in the Road Book.

Instructions giving the information for non-competing (Service/Assistance) vehicles to access these areas are provided in the Service Road Book.

The movement of service/assistance vehicles is strictly controlled and is forbidden along the



route of any Selective Section, except for those areas designated as Service Areas in the Road Book and Service Road Book.

A layout of the 2 Bivouacs will be posted on Sportity one week before the event.

FIM 080.28 SURVIVAL EQUIPMENT

This equipment is compulsory.

FIM 080.29 COMPULSORY SAFETY EQUIPMENT

2025 SR 080.29.1. 1. GPS UNI K4 with integrated Sentinel

See annex 4.

The mandatory equipment is not included in the cost of the Entry Fee or ordered on the competitors' behalf by the Organizers. The order form can be downloading on www.abudhabidesertchallenge.com

The cost of these devices is NOT included in the Entry Fee and must be paid directly to ERTF.

ERTF will request a deposit of €1700 for the material.

For Information about the ERTF system and to place your order, please visit the link below.

ERTF Off-Road Rallye Department

Parc Technologique De Soye

56275 Ploemeur Cedex, France

Tel.: +33 (0)2 97 87 07 08 - E-mail: competition@ertf.com

<https://www.ertf.com/index.asp>

2025 SR 080.29.1. 2. Inflatable jacket and other protections

The wearing of a waistcoat or airbag jacket and the chest protection are compulsory during every stage.

The products used must have been certified by the FIM.

The Rider must take a spare cartridge for his inflation wait coast with him.

The neck brace is not compatible with the airbag and is therefore prohibited.

2025 SR 080.29.1. 3. Tracking System

Competitors will use Iritrack by Marlink, the official tracking system supplier for the W2RC. Before the rally, please visit Marlink Eshop to pay online the Iritrack rental fees and buy the mounting kit if necessary.

Marlink Eshop: <https://eshop.marlink.com/en/abu-dhabi-desert-challenge.html>

Deposit: Competitors must provide a deposit of €1,500 by credit card when registering for the event; this deposit will be refunded as soon as the Iritrack has been returned and checked.

To save time at the administrative checks, fill up this [DEPOSIT FORM](#) and e-mail it to: services.events@marlink.com

This mandatory equipment must be order and paid directly from MARLINK.

However, for Iritrack V3 you will require to purchase a mounting kit with one of two options below.

- Buy a complete mounting kit online (power cable, bracket, antennas) from Marlink's online store. Shipment to the United Arab Emirates is possible within 3-4 days.
- Buy the complete assembly kit at the administrative checks. If you choose this method, you should be aware that you may only have a short time to install it before the scheduled time for scrutineering.

Installation of the mounting kit: your vehicle must be fully equipped with the Iritrack kit at the technical checks and ready to plug the Iritrack in. You can find more information and mandatory



instructions in the mounting guides provided on the Marlink website mentioned above. If you are not familiar with their Iritrack system, it is advisable to visit their resource page below on the Marlink Eshop and contact them with any questions (services.events@marlink.com). A training reminder will be given at the competitors' briefing.

[2025 SR 080.29.1. 4. Safety Plan](#)

The safety of the competitors is under the control of the well-established and experienced Abu Dhabi Desert Challenge Search & Rescue Team who coordinates the welfare of all riders based on information received through the tracking system, marshal and competitor communications.

They control three dedicated helicopters, the sweep team and a medical team composed of all the required specialties. Three local hospitals are alert and on standby with ICU reserved for event casualties.

A clinic is situated at the bivouac which is manned 24 hours a day.

Riders are expected to respect the emergency protocols and available resources in a manner commensurate with the vital nature of this service.

Riders are reminded that they are responsible for their own welfare and should pay good attention to hydration which is the biggest contributing factor to emergency evacuations from the stages which in turn place avoidable stress on the system and resources.

[2025 SR 080.29.1. 5. Helping at an accident](#)

It must be remembered that ethics demands that a rider who sees that an accident has occurred must stop in order to provide assistance in the most appropriate manner until the rescue service arrives. Also, it must be remembered that major means are implemented to shorten the intervention times.

Any rider that witnesses an accident placing another competitor in physical danger must:

- Stop,
- Press the SOS button on their tracking System,
- Establish contact with rally HQ to report the situation,
- Wait for the rescue service or another competitor to arrive, and then,
- Inform Rally HQ when that they are leaving the scene.

At the request of the competitor to the CRO or to the Clerk of Course on arrival at the end of the Leg before 17h00, the stopping time during the incident will be deducted from the time taken to cover the Selective Section.

Any competitor not complying with the above regulations will be reported to the Stewards who may impose penalties up to and including exclusion from the event.

- It is only for the first two riders.

FIM 080.30 ENVIRONMENT

See ADDC Environmental Plan on Sportity

[2025 SR 080.30. 1. Protecting the Environment](#)

Each participant and/or team member is responsible for the waste generated by his team during the event.

The Organizers will provide facilities for waste and used oil collection. It is strictly forbidden to empty onto the ground waste water or oil and any infraction to this rule will be reported to the International Jury who will fine the rider responsible a maximum of EUR 370.

Where refueling or servicing of a motorcycle is being undertaken, measures must be taken to protect the ground. Participants must use environmental mats or other suitable means to cover



the ground. This is also compulsory when an electrical generator or any other device with a thermic engine is being refueled or serviced by the rider or the team.

Sensitive area around the Bivouac must be respected and details will be provided at the compulsory competitors briefing on Friday, 21st February 2025.

Any infringement by the participant (who is responsible for his team) of the FIM Environmental Code can result in a fine, disqualification from the event or suspension, and may also result in the participant or rider being liable for any costs of rectification.

Please read also the ADDC Environmental Plan, available on Sportity.

FIM 080.32 RETIREMENT - DISQUALIFICATION

2025 SR 080.32 1. Number plate cross out in black

In case of retirement or disqualification, the Rider must cross out in black the number plates and the number of the race under penalty of a fine of 500 EUR and other possible sanctions pronounced by the FIM International Jury.

FIM 080.33 CLOSURE OF TRACK

2025 SR 080.33 1. Mechanical problem

In the event of a mechanical failure/ retirement during a Leg, in this case, you must notify the Clerk of the Course that you consider yourself to be retired on that Leg and request his permission to recover the machine or vehicle and/or receive outside assistance (Authorized Assistance). You can wait for the Sweep/Course Closing Team to arrive and they will take you back to the bivouac.

A Rider who retires from a leg but intends to restart must hand in his time card immediately on arrival at the Bivouac. Failure to hand in the time card will incur a penalty of 5 hours.

FIM 080.33 CLASSIFICATION

2025 SR 080.33. 1. General

All the various classifications will be published on Sportity App.

FIM 080.35 PROTESTS - APPEALS

2025 SR 080.35. 1. Protest Fee / Deposit

The amount of the protest fee / deposit is 660 Euros.

FIM 080.36 CEREMONIAL FINISH - PODIUM CEREMONY – PRIZES

2025 SR 080.36. 1. Location and Procedure

Place: TBC

Times: 19h30 on Thursday 27th February 2025

IMPORTANT: The "Finisher" podium Ceremonial will be at the end of the road section on leg 5 before to enter in Parc Ferme according to the arrival of the Competitors.



ERTF and MARLINK equipment needs to be given back before to enter in Parc Ferme. All competitors that finish the rally will receive a finishing medal.

Then at 19h30 the Ceremonial finish and Prize Giving Ceremony will be organized. Procedure will be posted by Bulletin through Sportity.

[2023 SR 080.36. 2. List of prizes – Cups](#)

Medals by W2RC Promotor
FIM W2RC Daily stage winners

- TROPHIES BY THE PROMOTOR

BI KE / QUAD RIDER

FIM W2RC RallyGP

1st (one trophy)

FIM W2RC Constructor

1st (one trophy)

FIM W2RC Cup Rally 2

1st (one trophy)

FIM W2RC Cup Quad

1st (one trophy)

- TROPHIES BY THE ORGANIZER

BI KE / QUAD RIDER

FIM RallyGP

1st, 2nd, 3rd (three trophies)

FIM Rally 2 Moto Rally

1st, 2nd, 3rd (three trophies)

FIM Quad World Cup

1st, 2nd, 3rd (three trophies)

FIM Rally2 Trophy: Women Trophy

1st, 2nd, 3rd (three trophies)

FIM Rally2 Trophy: Junior Trophy

1st, 2nd, 3rd (three trophies)

FIM Rally2 Trophy: Veteran Trophy

1st, 2nd, 3rd (three trophies)

FIM RallyGP Team Award

1st (one trophy)

- ORGANIZER CATEGORY

Adventure Challenge "Malle Moto"

1st, 2nd, 3rd (three trophies)

GCC Competitors*

1st, 2nd, 3rd (three trophies)

**Additional classification will be drawn among competitors who hold passport from the GCC Countries.*

SUMMARY OF THE PENALTIES

According to 2025 FIM World Rally-Raid Championship Rules (P93)

APPENDIX X 1 – ROAD TO DAKAR 2026



POUR LA SAISON 2025, LES COURSES LABELLISÉES **ROAD TO DAKAR** VOUS ACCOMPAGNENT À NOUVEAU TOUT AU LONG DE LA SAISON POUR VOUS PERMETTRE **D'ACQUÉRIR DE L'EXPÉRIENCE EN RALLYE-RAID, D'AUGMENTER VOS CHANCES DE SÉLECTION*** ET MÊME TENTER DE **GAGNER VOTRE INSCRIPTION AU DAKAR****

* En Moto
 ** En Ultimate ou SSV



GAGNER SON INSCRIPTION POUR LE DAKAR 2026

Pour gagner votre inscription au Dakar 2026, vous devez remporter le challenge Road to Dakar sur l'une des courses du calendrier mentionnées en page 2.

Les inscriptions au challenge sont gratuites et seront clôturées à la fin des vérifications administratives de chacun des rallyes.

L'équipage est éligible à la participation au challenge Road to Dakar si :

- Il n'a jamais participé au Dakar, et ce quelle que soit la catégorie.
- Il n'a jamais figuré dans les listes FIA Prioritaire & FIM Rally GP
- Il ne fait pas partie d'une équipe officielle.
- Il n'a jamais gagné un Road to Dakar

Le picto ci-dessous vous indique, en page 2, les catégories concernées par le Challenge Road to Dakar par rallye :



DEVENIR ÉLIGIBLE ET MARQUER DES POINTS POUR LES SÉLECTIONS 2026

Certaines courses labellisées Road to Dakar vous permettent de devenir éligible à la sélection Dakar et de marquer des points. Aucune inscription n'est offerte dans cette catégorie en cas de victoire.

Attention, pour les pilotes souhaitant participer au Dakar 2026, nous vous invitons à consulter les **Principes de sélections Motos** disponibles sur le site competitors.dakar.com.

Les courses mentionnées en page 2 de ce document vous permettent de vous préparer au mieux pour votre projet Dakar. A titre informatif, les épreuves permettant d'être éligible, le nombre de points potentiels associés ainsi que leur validité sont exprimés avec les logos ci-dessous :



Rallye	Date	SSV	Moto	Points
Abu Dhabi Desert Challenge	21 - 27 février 2025	12 PTS	12 PTS	POINTS VALABLES POUR LES SÉLECTIONS DAKAR 2026 ET 2027
South African Safari Rally	18 - 24 mai 2025	12 PTS	12 PTS	POINTS VALABLES POUR LES SÉLECTIONS DAKAR 2026 ET 2027
BP Ultimate Rally-Raid Portugal	22 - 28 septembre 2025*	6 PTS	6 PTS	POINTS VALABLES POUR LES SÉLECTIONS DAKAR 2027 ET 2028
Rallye du Maroc	10 - 17 octobre 2025	12 PTS	12 PTS	POINTS VALABLES POUR LES SÉLECTIONS DAKAR 2027 ET 2028



APPENDIX 2 – ADVENTURE TROPHY “MALLE MOTO” RULES

The Challenge « MALLE MOTO » is open to Bike and Quad Amateurs Riders who do not benefit from the assistance of an accompanying person registered in the race or in Service category, or in Media and more generally of any accredited person (Organisation, bracelets for guests, etc.). Any infringement will result in Disqualification of the Rider from this category.

EMSO will arrange the following items for the Competitors registered in MALLE MOTO:

- basic tent
- sleeping mattress
- sleeping bag
- 80L box to load their equipment into (except for the Competitors who are using the container offer)
- Environmental mat.

WORKING AREA

Shared resources for the malle moto group will include working area with pop-up tents, tables, access to electricity and some basic hand tools.

LOGISTIC

All logistics from start to finish of the rally in Abu Dhabi. This may include all the above equipment plus each person one piece of additional personal luggage bag (Max 100L), 3 spare tyres and 2 spare wheels and bike work stand.

The Rider's race number must be indelibly marked on the hubs of each wheel and visibly marked on each tyre.

All equipment transported by the Organisation must be handed over before the start of the Race at Scrutineering (Place and times will be communicated later).

TIMECARD MANAGEMENT

At the finish of a Stage, the Rider will give his Timecard to the Chief Marshal of the TC End of Stage, at the bivouac entrance; the Marshal writes his time of arrival and gives the Rider his Timecard back; the Rider goes straight to the “MALLE MOTO Bivouac” area and gives his Time Card to the person in charge of the area. A maximum time of 10 minutes must be respected. At the Bivouac, it is mandatory for the Rider registered in “MALLE MOTO” to set-up and make all/any service and repairs and sleep in the dedicated area, located close to the catering tent. This implies compliance with the following rules.

Only the Rider is allowed to:

- transport his tyres and wheels to the BF Goodrich area;
- work on his Machine or on a damaged part;
- set up and dismantle his tent.

Riders of the "MALLE MOTO" Challenge must not receive any outside help. Only Service between Riders of the “MALLE MOTO”, still in the race, or by the Organisation's staff dedicated to this category will be authorised.

Any other Service will be sanctioned, the penalty may go as far as the disqualification of the Rider from the category.

Riders may take their Machine or a damaged part out of the “MALLE MOTO” area only after having informed the person in charge of the area. Riders must be accompanied by a member of the Organisation, from the “MALLE MOTO” team, to carry out certain exceptional operations:

- Any repairs requiring specific equipment not available in the “MALLE MOTO” area, after agreement from the technical commissioner (welding, machining, suspension repairs, etc.).



These repairs must be carried out by Riders themselves under the supervision of a member of the Organisation accompanying him;

- Carry out tests;
- Refuel their Machines;
- Clean their Machines.

In case of litigation, the area manager will make a written statement to the Officials with the time of absence and the reasons.

If it appears that the type of operation does not comply with this article and/or that the spirit of the category is not respected, the Rider shall be excluded from the Challenge and may therefore no longer benefit from the related services.

In the event of withdrawal, the Rider:

- will continue to have access to his personal belongings and to sleep in the "MALLE MOTO" area;
- may in no case provide any form of Service to the remaining "MALLE MOTO" Riders still in the race.

MALLE MOTO STUFF WILL BE NOT AVAILABLE AT THE MARATHON STAGE.

APPENDIX 3 – ROAD BOOK LEXICON

Symbols for the Road Book

TRACKS		CONTROL		SYMBOLS		SYMBOLS		DIRECTION	
	TARMAC ROAD		DEPARTURE SELECTIVE SECTION		FENCE		PETROL STATION	180	BEARING (CAP)
	TRACK		ARRIVAL SELECTIVE SECTION		BARBED WIRE FENCE		MONUMENT	180_A	BEARING AVERAGE
	OFF PISTE OFF TRACK		PASSAGE CONTROL		RAILROAD		ANIMALS INDIVIDUAL	180_C	BEARING CALCULATED
	LESS VISIBLE OLD TRACK		START / FINISH NEUTRALISATION		HOLE		ANIMALS	OBLIC	BEARING OBLIGATORY
P	PISTE TRACK		START NEUTRALISATION WITH SPEED LIMIT		HOLE COLLAPS		CONE	ABBREVIATIONS	
PP	MAIN PISTE PRINCIPAL TRACK		START / FINISH TRANSFER		RIDGE		TYRE	L	LEFT
RO	ROAD		START TRANSFER WITH SPEED LIMIT		RUTS		CAIRN	R	RIGHT
P//	PARALLEL TRACKS	T:25	NEUTRALISATION / TRANSFER TIME IN MINUTES		TWISTY		ROCKS INDIVIDUAL	L/R	LEFT AND RIGHT
HP	OFF PISTE		WAITING FOR RESTART		BUMPY		MOUNTAIN INDIVIDUAL	R/L	RIGHT AND LEFT
	OFF PISTE FORBIDDEN		STOP FOR RESTART		LATERAL INCLINATION		CAMEL GRASS	onL	ON LEFT ON RIGHT
FPP	FOLLOW MAIN PISTE		REFUELING ZONE		UP HILL DOWN HILL		VEGETATION	onR	ON LEFT ON RIGHT
FRO	FOLLOW ROAD		MEDIA ZONE		ELECTRIC POLE		VEGETATION GRASS	kpL	KEEP TO THE LEFT
SA	SAND		SERVICE ZONE		ELECTRIC LINE		TREE INDIVIDUAL	kpR	KEEP TO THE RIGHT
GV	GRAVEL		TYRE MARKING/ CHECKING ZONE		HIGH VOLTAGE TOWER		PALM TREE	kpS	KEEP STRAIGHT
SAFETY			ZONE END		ANTENNA MAST		SMALL WADI	+√	MORE VISIBLE
	DANGER 1	ON TRACK			WELL		LARGE WADI	-√	LESS VISIBLE
	DANGER 2		BUMP		WATER TANK		SANDY WADI	±√	MORE / LESS VISIBLE
	DANGER 3		DIP HOLE		POST		RIVER	/	ON
	DANGER FOR ALL SYMBOLS		COMPRESSION		KILOMETER MARKER		WATER SEA, LAKE	IN	IN INTO
	START / DEPART SPEED LIMIT		DITCH		BARREL		PLAIN	ET	AND NEXT
	FINISH SPEED LIMIT		SUMMIT		SIGN POST		TOWARDS	A	AT
	STOP		STEP UP		ROAD WORK		DISTANCE	CX	STONY
	SLOW DOWN		STEP DOWN		HOUSE BUILDINGS		DUNES / SAND	E3	NARROW
	RESTRICTED AREA		CONCRETE		CHURCH MOSQUE		SAND PLAIN	Q^T	QUIT LEAVE
25,25	DANGER 2 IF RED LINE UNDER KM		UNDER BRIDGE		RUINS INDIVIDUAL		BIG BOWL IN DUNES	TJS	ALWAYS
WAYPOINTS			ABOVE BRIDGE		FORT		SAND SPIT	NBX	MANY
	WAYPOINT MASKED		LEFT OVER CREST		CEMETERY		DUNE	IMP	IMPERATIVE
	WAYPOINT CONTROL		RIGHT OVER CREST		VILLAGE		BROKEN DUNE	EFF	COLLAPSED
	WAYPOINT SAFETY		GATE BARRIER		BIVOAC CAMP		DUNES	ORN	RUTS UNDULATION
	WAYPOINT NAVIGATION		CATTLE GATE BARRIER		TUNNEL	DN	ONE DUNE	BAD	BAD
	WAYPOINT VISIBLE		GATE BARRIER		PIPELINE	DNX	DUNES	RP	REJOIN
	WAYPOINT ECLIPSE		WATER CROSSING		WALL	DNT	DUNETTES SMALL DUNES	BTW	BETWEEN
	WAYPOINT NUMBER		SHORT DISTANCE TO NEXT BOX		STONE WALL	L1 L2 L3	LEVEL OF DUNES	MODIF	MODIFICATION OPENING CAR
								NEW NOTE	NEW NOTE OPENING CAR
								BIG SMALL FOLLOW	WRITTEN AS TEXT

APPENDIX 4 – ERTF GPS UNIK4

MEMO GPS UNIK4 MOTO RALLYE RAID – VERSION 2024

MOTO/QUAD

Activation and GPS buttons

Long press : Parameters
Long press : ON/OFF
Short press : Sleep mode

The bell 🛎️ : Satellite reception indicator. No icon: all clear, good satellite hook. If the bell appears static or flashing, check that the antenna and its cable are connected and not damaged.

The battery 🔋 : Power supply indicator. No icon: all clear, Unik4 power supply by the vehicle battery.

The plug 🔌 : Power supply indicator. Indicates the Unik4 is powered by the internal battery: quickly review its installation before battery discharge.

⚠️ When arriving at the bivouac, don't forget to switch off your Unik4 or to put it on sleep mode. We advise you to turn off the power of the Unik4 at night so as not to discharge the battery of the Bike or Quad.

Daily Code

Open the **Parameters** menu by a long press Enter the 4 numbers code given by organisation and validate with OK.

Navigation general screen in WPM

Total ODO	Speed	COG = Heading followed	GPS
256.0	113 km/h 0.92	12	Road-book
256,9	320 A		
0,6	360 A	NBX P 64	
257,5	345 A		
0,6	K257		

Number of validated waypoints

Target waypoint name

Target waypoint number

Speed limit zone DZ-FZ

16,4	30 Moy	-V	QPP
0,5			
17,1	RP PP	80 Moy	
0,7			
19,4	NEUTRALISATION		
2,3	DZ134	0.07	128

Target waypoint number

Target waypoint name

DTW = Distance to reach the target waypoint

Current speed and speed limit

🛑 Symbol: If this symbol appears, the GPS is checking the max speed

Remote control

Increase or decrease the Trip

Moving the Roadbook forward or backward

Menu access

Note: In case the remote control doesn't work anymore, you can activate a digital remote by pressing the bottom right of the screen for 3 seconds.

Trip+ Trip-

Escape

Menu

October 2024

MEMO GPS UNIK4 MOTO RALLYE RAID – VERSION 2024

MOTO/QUAD

Parameters

Default settings are adapted to Rally-Raid navigation. Do not touch it unless you are sure what you are changing.

To choose how many decimals you prefer for the ODO

Enter the stage code and validate with OK

Allows you to choose amongst 3 screen modes

The buzzer beeps to notify actions on GPS.

To choose the buzzer sound intensity

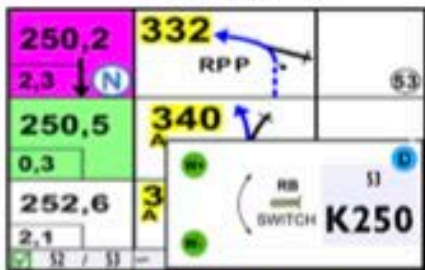
To active if the remote control is broken

If you would rather press the top left of the screen to move the Roadbook forward.

To go directly to the 1st DSS

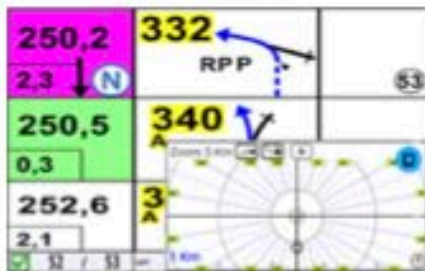
To set the brightness, especially at night.

Menu Screens

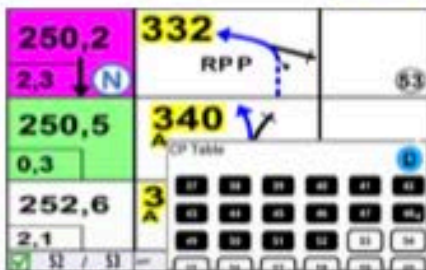


Waypoint +/- Screen

Track Screen



CP Table Screen



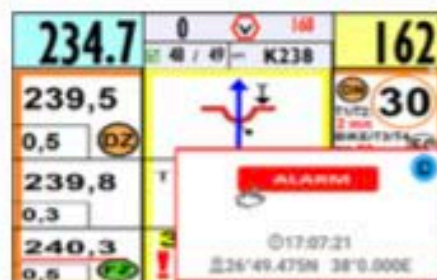
Sentinel function

Someone wants to overtake you : you hear
Bip bip bliip – Bip bip bliip
Prepare to pull over asap



Accident

If you breakdown or if you have a crash **in a dangerous place (after a turn or a dune)**: press the **red Alarm button accessible from the Menu**, you will send a signal to the competitors at maximum 250m around regarding the ground.



To stop the Alarm press the button again.

The Alarm function is automatically deactivated as soon as the vehicle runs above 20km/h.

There is an accident near by: you hear
Bliip – bliip – bliip

APPENDIX 5 – MARLINK IRI TRACK



USER GUIDE IRI TRACK



Buttons must be pushed (3 seconds) until the LED « STATUS » flashes and sending indication pops on the screen.

After pushing **RED button** the LED « STATUS » stays lighted in blue.

Then it flashes during 1 minute, confirming that the HQ is receiving your alarm

CALL HQ
Can take few minutes to establish the connexion.

MECHANICAL ISSUE
You or another vehicle Push the green button when leaving, your stop time may be deducted.

NEED MEDICAL ASSISTANCE
You or another person
Victim or witness of a body injury.

IRITRACK BUTTONS



USER GUIDE IRI TRACK



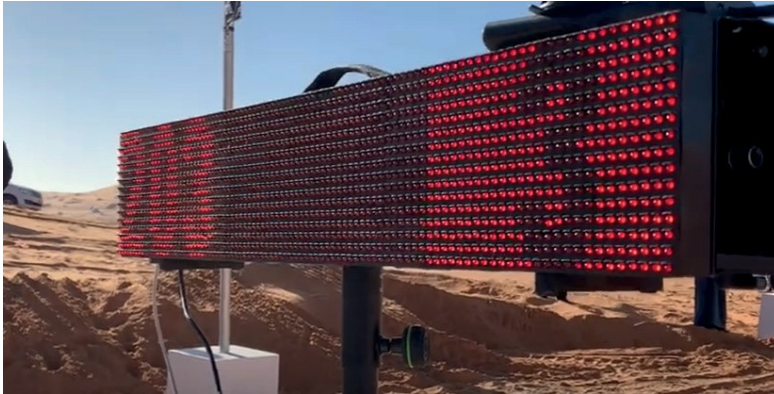
LED		
PWR Green: External power Red: Internal battery	STATUS Green: signal OK Red: Searching signal	EVENT Light flash during message or call reception



SEND A TEXT MESSAGE

- 1 + « OK » to enter in the messages list
- 2 Select your message using the arrows
- 3 Push twice on « OK » to send
 - Yes / No
 - Need water
 - Emergency, need medical help
 - Many injured
 - Mechanical issue / Out of gas
 - Lost, ...

APPENDIX 6 – ELECTRONIC START PROCEDURE AT SELECTIVE SECTION (SS)



System description:

- Shows Race Number and last 15 seconds countdown
- Shows Race Number and GO word – GO blinking for 3 seconds.

APPENDIX 7 – FIM RIDERS' INSURANCE INFORMATION



FIM Riders' insurance information

The rider's insurance policy set up by the FIM is a service for all the Federations that are part of the programme for the period from January 1, 2025 to December 31, 2025.

Who is covered:

- Riders with a FIM/CONU/NMFP/Training Camp licence issued by a Federation which is part of the FIM riders' insurance programme.
- Riders competing in MotoGP, Moto2, Moto3 and MotoE are not part of the FIM riders' insurance programme and must follow the guidelines of their respective Federation.
- Riders competing in a Cross-Country Rally must follow the guideline of the Rally organiser.

Validity of the insurance:

- For all events on the FIM/CONUs/NMFP Calendars with an International Manifestation Number (IMN) or a National Manifestation open to Foreign Participation Number (MNFP).
- For racing activities included in the official programme of the event only!
- Travel to and from the event venue.

Scope of coverage:

In case of accident, the FIM riders' insurance programme would cover:

- **Emergency Medical treatment on the event's place** (subsidiary and complementary to any other insurances the rider may hold)
- **Repatriation to the rider's country of residence** (as declared on the FIM/CONU/NMFP/Training Camp licence extranet by the rider's FMN)
- **Death and Disability** (Riders with a FIM/CONU/NMFP/Training Camp licence issued by a Federation which has subscribed this benefit through the FIM program)

Coverage is provided only in the country (or countries) where the insured event takes place, which may be anywhere in the world including the insured's principal country of residence.

Please note that this is an EMERGENCY insurance and in order to avoid any problems please follow the correct procedure.

What to do?

Before departure:

- Always check beforehand whether your personal health insurance card is still valid.
- For European citizens, please travel with your European Health insurance card.

In case of an Emergency Incident /Urgent medical assistance need:

- Contact the FIM insurer immediately before any action whatsoever
 - 24/7 Emergency Contact number:
+33 (0)1 55 98 51 68
 - 24/7 Emergency Email Contact and claim reimbursement:
voyage@mutuaide.fr

When contacting any of the claims team you will need to provide:

- Your FIM/CONU/NMFP/Training Camp licence number and your contact details
- The FIM event number
- The venue of the eve





PRESENTED BY



ORGANIZED BY



SANCTIONED BY



Important notes:

- When you are being transported to hospital for medical examinations treatment and/or assessment:
 - Always take your documents related to your personal health insurance and to the FIM riders' insurance programme when you are being transported.
- When receiving medical assistance at the event/hospital:
 - You/a nominated representative must always receive a complete clinical record of all medical examinations, treatment and assessment.
- Always provide the insurance file number provided to you during your first call.
- Make sure your Federation indicates the correct country of residence in your details and your correct emergency and authorized contact persons. Any repatriation will be to the address/country provided by your Federation on the FIM Extranet site.
- The FIM riders' insurance programme is only valid at FIM/CONU/MNFP events with a valid Number (IMN) or NMFP. If you are attending private test and/or non-event practice days, YOU WILL NOT BE COVERED by the FIM insurance.
- Always follow the instructions or you may no longer be covered by the FIM riders' insurance programme!
- Please ensure you agree upon any medical care or medical arrangements with the FIM insurer before taking any action whatsoever!



- Do not delay in contacting the emergency helpline. Make the call as soon as you can to advise of your accident!
- Do not change or leave the hospital, before contacting the emergency claims line, or the FIM insurance services may not be provided.
- Do not leave the country in which the incident occurred, before contacting the emergency claims line, or the FIM Insurance services may not be provided.



Benefits table:

ASSISTANCE GUARANTEES	CEILING
- Medical expenses (in addition to and/or in substitution of any public or private supplemental plan) (A)	(A) 400,000.00 EUR In the absence of a public or private supplemental plan, the guarantee is capped at EUR 125,000.00 Cross-Country Rally licence excess 10,000 EUR (30,000 EUR at the Dakar)
- Expenses for search and rescue (B)	(B) 50,000.00 EUR
- Repatriation or medical transport (C) Medical evacuation Repatriation for medical reasons	(C) Real costs Cross-Country Rally licence excess 40,000 EUR
- Dispatch of a doctor on site (D)	(D) Real costs
- Monitoring of inpatient and outpatient care (E)	Telephone assistance (F1) Real costs (F2) Real costs (F3) Real costs
- Repatriation of remains Repatriation of remains (F1) Funeral expenses necessary for transport (F2) Assistance with death formalities (F3)	(G) Real costs (H) 5,000.00 EUR
- Repatriation of an accompanying person (G)	EUR
- Visit of family member/close friend (H)	(I) Telephone assistance
- 24/7 medical advice (I)	(J) Telephone assistance
- Access to the network of medical providers (J)	(K) Telephone assistance
- Second medical opinion (K)	(L) Shipping costs
- Dispatch of medication (L)	(M) Telephone assistance
- Linguistic assistance (M)	(N) 2 telephone consultations
- Psychological support (N)	(O) 10,000.00 EUR
- Early return (O)	(P) 1,900.00 EUR
- Extension of stay (P)	
INDIVIDUAL ACCIDENT (IF OPTION SUBSCRIBED)	
- Accidental death (Q1)	(Q1) 50,000.00 EUR
- Total permanent infirmity following an accident (Q2)	(Q2) 50,000.00 EUR If permanent disability greater than 55%, then compensation = 100% of the insured capital

APPENDIX 8 – SPORTITY APPS

This year the organizers will employ the use of Sportity mobile app to host all the sporting documents for the entire event. Please enable notifications on the app after you install it to ensure you receive the latest notifications when documents are uploaded. A token that all competitors can use to access the Abu Dhabi Desert Challenge Channel will be sent via email after the posting of the provisional entries list.

This may include but is not limited to the following.

- Rally Guide
- Supplementary Regulations
- Auto & Moto Itinerary
- General and Safety Briefing Notes
- Bulletins
- Maps/Layouts
- Entry lists
- Documentation and Scrutineering Schedules
- Starting lists
- Provisional Classifications
- Penalties
- Road book modifications

The image shows the Sportity app interface. At the top, there is a purple icon with a white 'S' and the text 'Sportity Sports' with a 1-star rating and an 'OPEN' button. Below this are two smartphone screens: the left one is titled 'Enter your token' and shows a login screen with a 'Sportity' logo and an 'Enter your token' field; the right one is titled 'Get the information' and shows a menu with options like 'Home', 'Other useful information', 'Competitive information', 'New Day?', and 'Calendar'. To the right of the screens is a purple banner that says 'Sportity app is available in' with 'Available on the App Store' and 'Get it on Google play' buttons, each with a QR code below it.

The image shows two purple banners for downloading the Sportity app. The left banner says 'For direct event information please download the Sportity app and insert this password: 25ADDCINFO' and includes the Sportity logo, the website 'www.sportity.com', and 'Sportity app is available in' with 'App Store' and 'Google play' buttons and QR codes. The right banner says 'For direct event information please download the Sportity app and insert this password: ADDC25FIM' and includes the Sportity logo, the website 'www.sportity.com', and 'Sportity app is available in' with 'App Store' and 'Google play' buttons and QR codes.